

## Genetec Integration datasheet



This API integration is compatible with Genetec version 5.8 and onwards. Part code: GSC-15DKTIMEWARE-TWPro

### Genetec

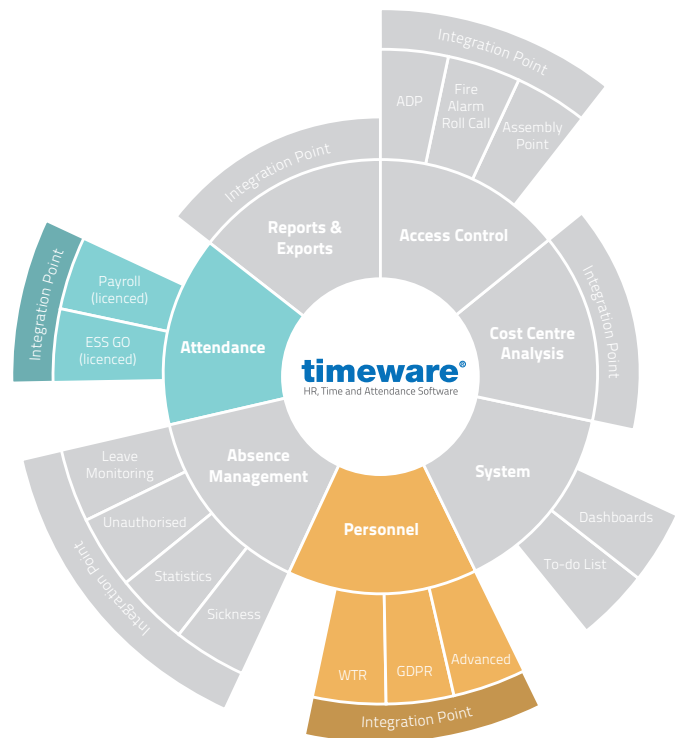
Genetec is a world class provider of IP-based security solutions. From CCTV, physical access control through to vehicle barrier control and ANPR, Genetec can provide resilient, connected solutions for every market sector.

### timeware<sup>®</sup>/Genetec Approved Integration overview

timeware<sup>®</sup> have created an API integration between Genetec and timeware<sup>®</sup> Small Business and timeware<sup>®</sup> Professional. This means that Genetec customers requiring a feature rich employee attendance solution can benefit from a software only integration that requires no additional attendance devices.

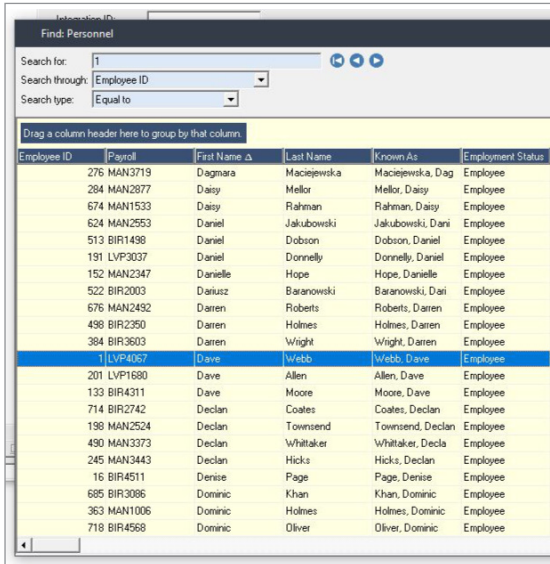
This integration eliminates 'duplicate entry' enabling personnel/cardholder and their associated credentials created in timeware to be passed directly to Genetec.

Eg: An administrator can specify which readers are classed as attendance points and bookings made at these points can be read by timeware<sup>®</sup> from the database and processed by timeware<sup>®</sup> as attendance bookings.



## timeware® / Genetec integration functions

### timeware® Personnel



Find: Personnel

Search for: 1

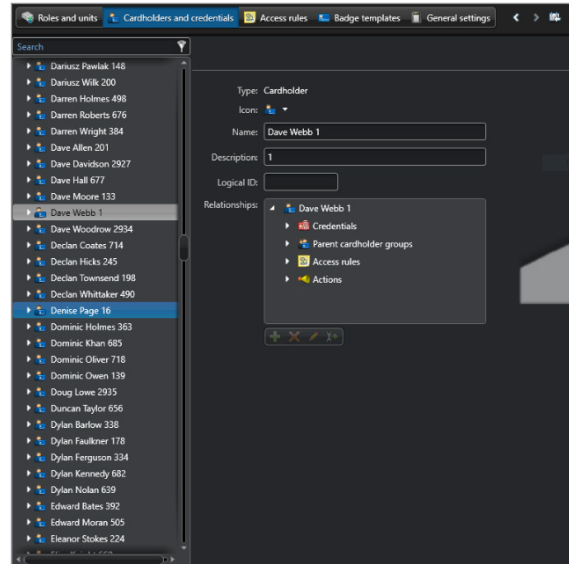
Search through: Employee ID

Search type: Equal to

Drag a column header here to group by that column.

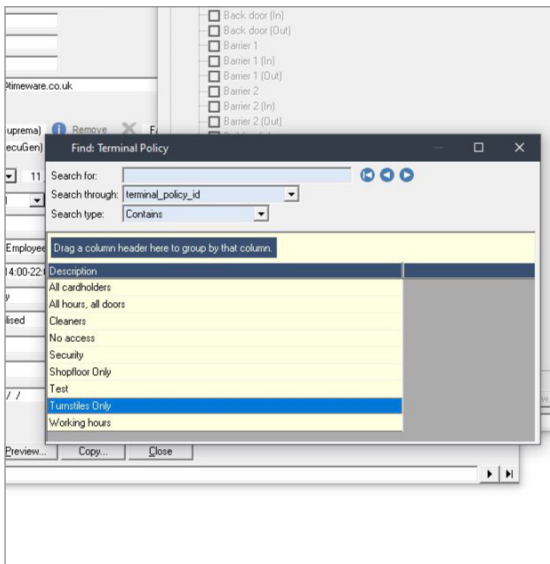
Employee ID	Payroll	First Name	Last Name	Known As	Employment Status
276	MAN3719	Dagnara	Maciejewska	Maciejewska, Dag	Employee
284	MAN2877	Daisy	Mellor	Mellor, Daisy	Employee
674	MAN1533	Daisy	Rahman	Rahman, Daisy	Employee
624	MAN2553	Daniel	Jakubowski	Jakubowski, Dani	Employee
513	BIR1498	Daniel	Dobson	Dobson, Daniel	Employee
191	LVP3037	Daniel	Donnelly	Donnelly, Daniel	Employee
152	MAN2347	Danielle	Hope	Hope, Danielle	Employee
522	BIR2003	Dariusz	Baranowski	Baranowski, Dari	Employee
676	MAN2452	Darren	Roberts	Roberts, Darren	Employee
498	BIR2350	Darren	Holmes	Holmes, Darren	Employee
384	BIR3603	Darren	Wright	Wright, Darren	Employee
1	LVP4067	Dave	Webb	Webb, Dave	Employee
201	LVP1680	Dave	Allen	Allen, Dave	Employee
133	BIR4311	Dave	Moore	Moore, Dave	Employee
714	BIR2742	Declan	Coates	Coates, Declan	Employee
198	MAN2524	Declan	Townsend	Townsend, Declan	Employee
490	MAN3373	Declan	Whittaker	Whittaker, Decla	Employee
245	MAN3443	Declan	Hicks	Hicks, Declan	Employee
16	BIR4511	Denise	Page	Page, Denise	Employee
685	BIR3086	Dominic	Khan	Khan, Dominic	Employee
363	MAN1006	Dominic	Holmes	Holmes, Dominic	Employee
718	BIR4568	Dominic	Oliver	Oliver, Dominic	Employee

### Genetec Cardholders

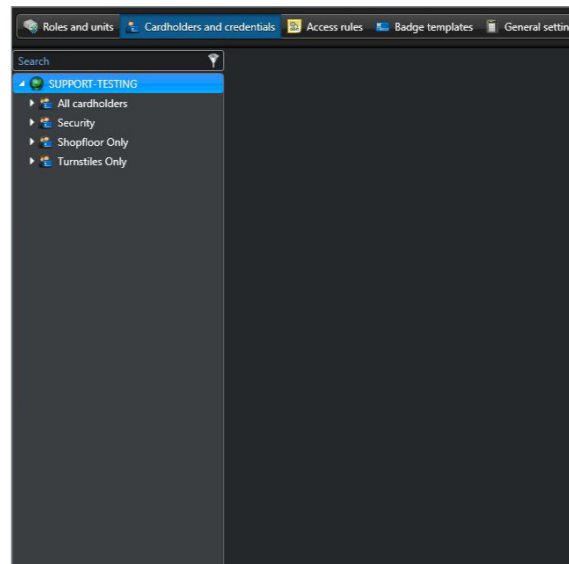


The API integration enables control of the transfer from timeware® Personnel and Genetec Cardholder.

### timeware® Terminal Policy



### Genetec Cardholder Policy



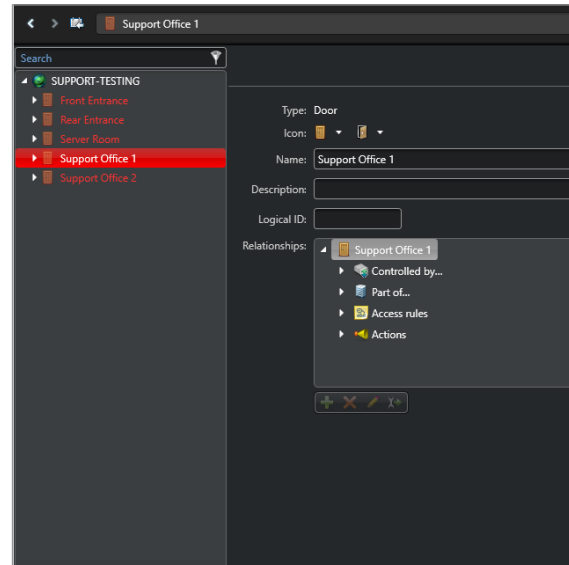
The API integration enables control of the transfer of timeware® Terminal policies to Genetec Cardholder policies.

## timeware® Terminals



Connection Status	Group	Terminal ID	Number	Description
Not tested in this session	N/A	1001	-1	GPS
Not tested in this session	N/A	1002	0	Employee Self Service
Suspended	Access Control	1005	103	Server Room
Suspended	Access Control	1006	104	Support Office 1
Suspended	Access Control	1007	105	Support Office 2
Suspended	Attendance	1003	101	Front Entrance
Suspended	Attendance	1004	102	Rear Entrance

## Genetec Doors



Support Office 1

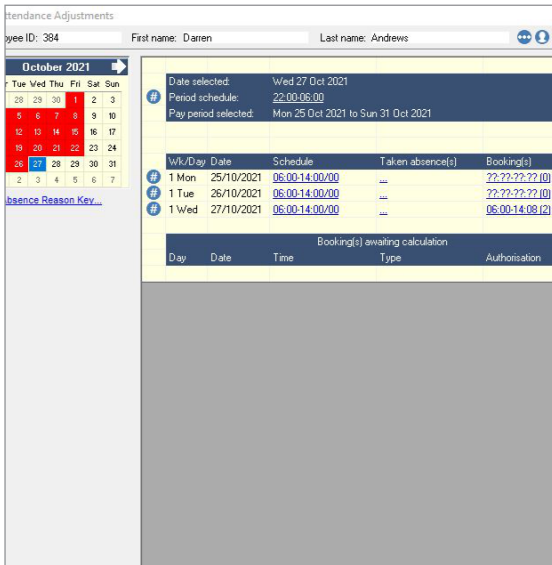
- SUPPORT-TESTING
  - Front Entrance
  - Rear Entrance
  - Server Room
  - Support Office 1
  - Support Office 2

Type: Door  
Icon: [Icons]  
Name: Support Office 1  
Description:  
Logical ID:  
Relationships:

- Support Office 1
  - Controlled by...
  - Part of...
  - Access rules
  - Actions

The API integration enables control of the transfer from Genetec Doors to timeware® Terminals.

## timeware® Bookings



Attendance Adjustments  
Employee ID: 384 First name: Darren Last name: Andrews

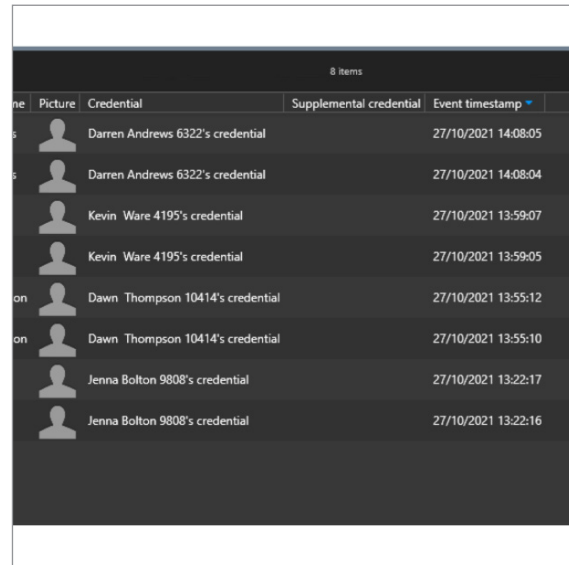
October 2021

Wk/Day	Date	Schedule	Taken absence(s)	Booking(s)
1 Mon	25/10/2021	06:00-14:00:00	---	??-??-??-??(0)
1 Tue	26/10/2021	06:00-14:00:00	---	??-??-??-??(0)
1 Wed	27/10/2021	06:00-14:00:00	---	06:00-14:08(2)

Bookings(s) awaiting calculation

Day	Date	Time	Type	Authorisation
-----	------	------	------	---------------

## Genetec Events



Name	Picture	Credential	Supplemental credential	Event timestamp
Darren Andrews	[Icon]	Darren Andrews 6322's credential		27/10/2021 14:08:05
Darren Andrews	[Icon]	Darren Andrews 6322's credential		27/10/2021 14:08:04
Kevin Ware	[Icon]	Kevin Ware 4195's credential		27/10/2021 13:59:07
Kevin Ware	[Icon]	Kevin Ware 4195's credential		27/10/2021 13:59:05
Dawn Thompson	[Icon]	Dawn Thompson 10414's credential		27/10/2021 13:55:12
Dawn Thompson	[Icon]	Dawn Thompson 10414's credential		27/10/2021 13:55:10
Jenna Bolton	[Icon]	Jenna Bolton 9808's credential		27/10/2021 13:22:17
Jenna Bolton	[Icon]	Jenna Bolton 9808's credential		27/10/2021 13:22:16

The API integration enables control of the transfer from Genetec Events to timeware® Bookings.

## Technical

Executed by the NMD3 Event Handler service.

Integration frequency determined during configuration.

## Employees

Newly added personnel records are created in timeware® and are sent across to the Genetec system along with their relative fields below.

Genetec Field	timeware® Field
Name	First name + Last name
Cardholder Policy	Terminal policy (employee.terminal_policy_id)

## Doors + Cardholder Policies:

Any new doors or cardholder policies created in Genetec get automatically sent across to timeware®. Doors get created as terminals in timeware® - based on the requirements, you will either set it as an access control device or an attendance device. All devices are initially suspended, and you unsuspend the devices we are required to pull data from. Cardholder groups get created as terminal policies and are assigned against the personnel records.

Genetec Field	timeware® Field
Devices	Terminals (new tterminal record)
Cardholder Policy	Terminal Policy (new tterminal_policy record)

## Bookings/Events:

Events from the Genetec database get brought into timeware® to be shown as access control or attendance data. This is decided by the device type of the corresponding tterminal record.

Genetec Field	timeware® Field
Events	twork records (could be access or attendance data based off corresponding tterminal record)

## Annual licence

The Genetec integration is enabled by an annual licence.